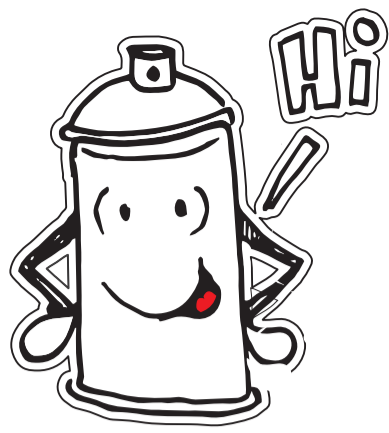


MAKING A PASTE-UP



WELCOME to this community paste-up wall
We invite all of you to have a go at contributing a piece of your art to the Back Alley Gallery located on Bundjalung Country (Lismore).

The following contains instructions on how to create your very own bit of street art in the form of a paste-up / poster.

We ask that you be mindful that this is family friendly space and ask that you create something that is inclusive and community spirited.

The nature of this project means that it **WILL** evolve, and constantly change as people contribute to the wall so please understand if your artwork does not stay forever! The nature of street art is that it is ephemeral and often only ever exists in photos so don't forget to take a snap shot of your creation!

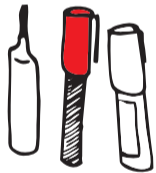
Please also take any leftover paste and paper with you and limit your pasting up to this wall for now.

MAKING A POSTER

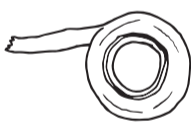
YOU WILL NEED:



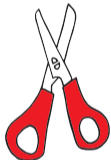
PAPER OR A PRINTED DESIGN
(the lighter the paper the better)



PAINT PENS OR MARKERS



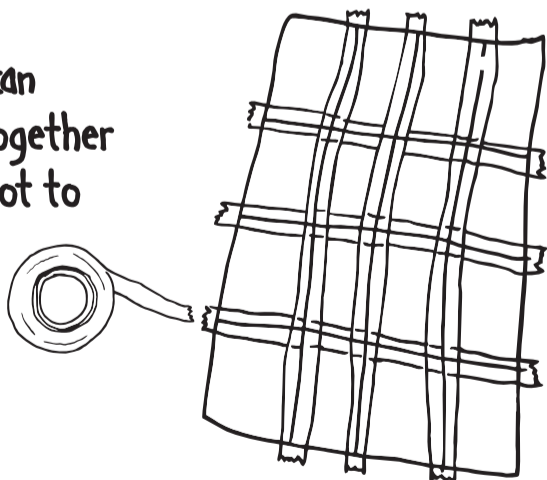
MASKING TAPE



SCISSORS OR CRAFT KNIFE

1. MAKE A DRAWING / DESIGN

if you want it to be big, you can always tape pieces of paper together to make a LARGE piece (try not to overlap the edges).



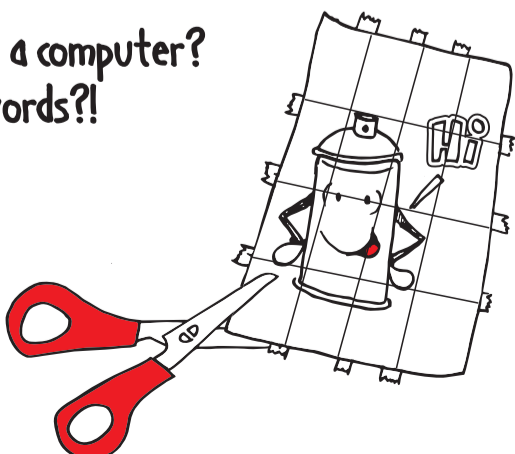
2. Draw your design onto the paper.

CAN'T DRAW????

well you can print out images from a computer?
or you can simply print out some words?!
the lighter the paper the better!

3. SNIPPY SNIP

cut your creation out using a pair of scissors or a craft knife



MAKING THE PASTE

There is more than 1 method to make paste but this is the most "common" method
Have a look on the internet to see what method suits you!

YOU WILL NEED:



FLOUR



WATER



SAUCEPAN FOR BOILING WATER AND MIXING PASTE



SUGAR (optional)

1. Measure out a 1:4 ratio of flour to water start with something like 1 cup of flour to 4 cups of water.
2. Add the water to a medium sized saucepan and heat until the water is boiling.



3. Once the water begins boiling pour in the flour and stir THOROUGHLY, be careful to mix in any lumps of flour.

4. Once the wheat paste reaches a smooth and glue like consistency turn off the heat and pour the paste into a separate container to cool.



The paste must be used within 3 days and stored in the fridge.

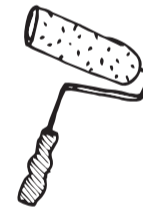
Note: if you would like the paste to be extra sticky you can add a little sugar to the mix.

PASTING THE POSTER

YOU WILL NEED:



BUCKET/CONTAINER



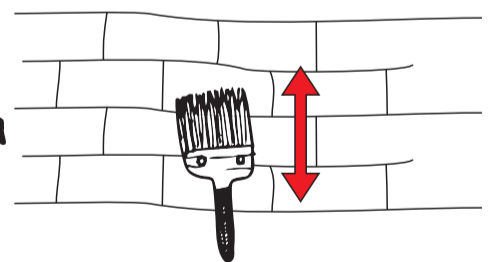
ROLLER OR PAINT BRUSH



YOUR POSTER

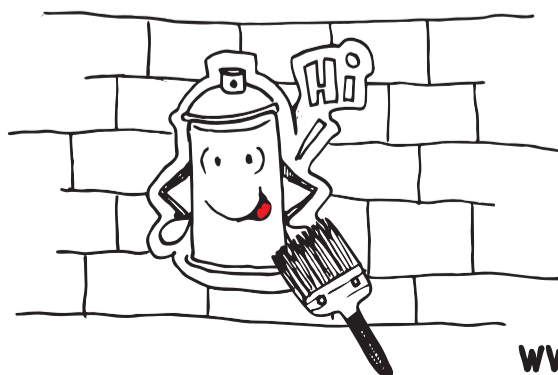
Find a smooth wall or surface (like this amazing community wall)

1. Prep the surface by applying a generous layer of your wheat paste or glue, covering the same sized area of your artwork.



2. Place your artwork onto the wall while the glue is still wet. Apply a layer of the wheat paste on top of your artwork, make sure to cover all of your work, pushing firmly with your brush or roller. (remember that the paste will dry clear)

*Note bubbles may appear but that's all part of it



Let your poster dry.
Stand back and admire your amazing street art!

DON'T FORGET TO TAKE A PHOTO!!!!  
tag @thebackalleygallery

www.thebackalleygallery.com